



**Finland's leading equipment shelter supplier**







## A pioneer in its field

Since our company's founding in 1993, we have supplied nearly 4,000 equipment shelters to our customers, including telecommunications operators, energy companies and the Finnish Transport Infrastructure Agency. We designed our first equipment shelters over 25 years ago for the emerging mobile network and have never stopped improving our products.

We supply our equipment shelters on a turnkey basis, meaning that the delivery includes the electrical, cooling and other installations required by the customer. The foundations of our business are the manufacture and sales of equipment shelters that meet the needs of our customers and the continuous development of our products. At the same time, we strive to improve the overall look of municipal engineering projects by designing energy-efficient solutions that blend into their environments.

We protect our customers' civil engineering installations with high-quality equipment shelters. Our long-term cooperation with customers and subcontractors enables the continuous development of our products. We are a unique and reliable partner.

The values of Esari Oy are drive, hard work and workmanship.





# Equipment shelters for a diverse clientele

## High quality

Today's Esari product family ranges from small wood-framed equipment shelters to larger steel or concrete-framed shelters – assembled into comprehensive packages for the needs of a diverse clientele. Our advanced construction methods and high-quality materials guarantee a robust and reliable equipment shelter with a long service life. Esari's equipment shelters are also fully customisable with, for example diverse cladding and roofing options.

## Flexible deliveries

- Equipment shelters with various cladding and roofing options
- Standard or custom electrical installations
- Air-source heat pumps and fans
- Reserve power stations
- Devices and accessories for telecommunications and fibreoptic networks
- Foundation beams
- Installation of the customer's equipment
- Special transport and professional installation

## Telecommunications equipment

We designed our first equipment shelters over 25 years ago for the emerging mobile network and have never stopped improving our products. Therefore, we offer the widest range of shelters on the market for any requirements, whether dictated by technology or the environment.



## Power generation and distribution

Esari's equipment shelters are perfect for the demanding needs of the energy industry due to their versatility and fully customisable dimensions. Our equipment shelters are delivered as ready-to-use packages with all the details thought out. We can include switchgear and distribution board installations, as well as laying the foundations and erecting the equipment shelter in our delivery. Our extensive range also includes models for distributing liquid and gaseous fuels.



## Railway and safety device

Esari's safety device shelters are designed to meet the stringent quality requirements set for railway safety devices. We offer a wide range of shelters, from small steel-framed models to large shelters built on site, without compromising on quality. We can also do the electrical and device installations for the shelters if you require.



## Certified operations

Oy Esari Ab's operations are systematic and documented. All of our operations are certified according to international ISO standards. Our company has been granted the ISO9001 quality management certificate.

## Reserve power facilities

An uninterrupted power supply is increasingly important for the continuity of operations. Esari's reserve power facilities have been developed in collaboration with the industry's largest reserve power generator suppliers. The result is a complete package in which all the details crucial for easy and safe use have been thought out. Esari's reserve power facility is a turnkey package, which can include the generator's installation and commissioning if you require.



## Industry

The wide range of structural and size options and diverse features of Esari's equipment shelters make them perfect for demanding industrial environments. An equipment shelter makes for a great industrial pump house, process equipment room, sampling and analysis facility or even a safe space for operators. With careful design and the correct and appropriate choice of materials, our equipment shelters can meet the most exacting needs and requirements.



## Special sites

No project is too challenging for us, and we are used to working with special environmental or technical requirements. If the equipment shelter is too large or the location too remote for road transport, we will build the equipment shelter on site. Whatever the method, we never compromise on the quality of the end result. We have built dozens of 30–150m<sup>2</sup> equipment shelters on site for customers all over Finland.



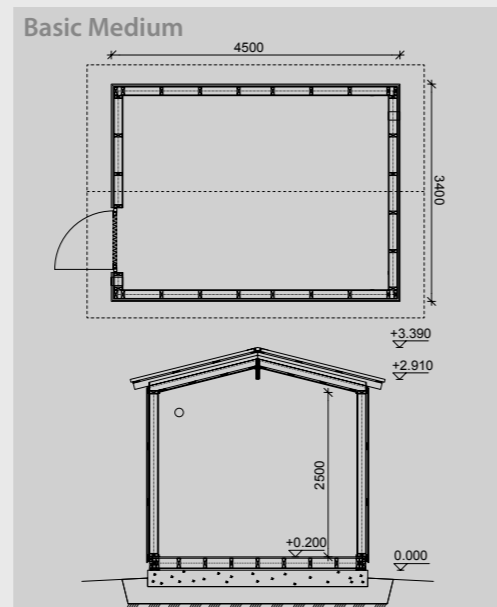




# Basic

The wood-framed and gable-roofed **Esari Basic** is the best-selling model in our range. The model's standard fire class is P3, which can be changed to meet the requirements of fire class EI30/EI60 with technical changes to the structure. Facade cladding is chosen according to the customer's needs. In addition to various sheet metal options, we also offer wood, wood-based panel and brick cladding.

- Room height 2.5 m
- Floor's load-bearing capacity 600 kg/m<sup>2</sup>
- Steel door painted to match the walls
- Abloy locks keyed to the customer's specifications
- Fire class P3
- Structural U-value 0.26–0.29 W/m<sup>2</sup>K



Basic Mini with wood cladding



Basic Medium with sheet metal cladding



Basic Maxi with brick cladding

Basic range	Area / m <sup>2</sup>	External dimensions / m x m	Volume / m <sup>3</sup>	Weight / kg	U-value / W/m <sup>2</sup> K	Fire class
Micro	4.5	2.5 x 2.5	11.3	1,350	0.26–0.29	P3
Mini	6.3	2.5 x 3.4	15.8	1,700	0.26–0.29	P3
Midi	7.7	2.5 x 4.0	19.3	2,000	0.26–0.29	P3
Medium	12.3	3.4 x 4.5	31 / 33.4 *	2,650	0.26–0.29	P3
Maxi	16.8	3.4 x 6.0	42 / 45.5 *	3,350	0.26–0.29	P3
Mega	20.9	3.4 x 7.3	52.3	4,000	0.26–0.29	P3

\* Slanting ceiling



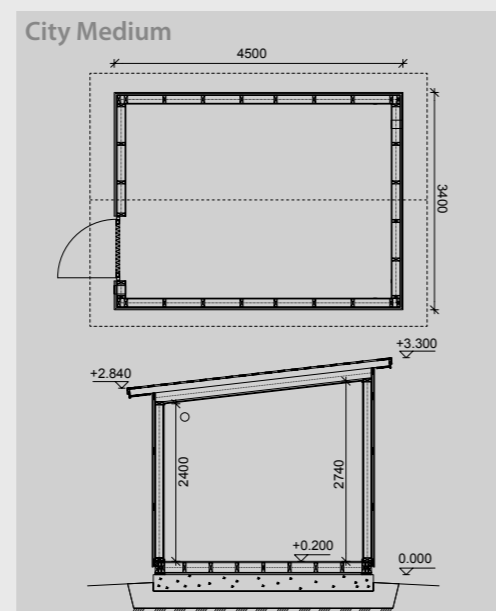




# City

The **Esari City** model features a pitched roof and wooden frame and is used in areas which already contain pitched-roof buildings. The model's standard fire class is P3, which can be changed to meet the requirements of fire class EI30/EI60 with technical changes to the structure. Facade cladding is chosen according to the customer's needs. In addition to various sheet metal options, we also offer wood, wood-based panel and brick cladding.

- Room height 2.5 m
- Floor's load-bearing capacity 600 kg/m<sup>2</sup>
- Steel door painted to match the walls
- Abloy locks keyed to the customer's specifications
- Fire class P3
- Structural U-value 0.26–0.29 W/m<sup>2</sup>K



City Mini with wood cladding



City Medium with wood cladding



City Mega with sheet metal cladding

City range	Area / m <sup>2</sup>	External dimensions / m x m	Volume / m <sup>3</sup>	Weight / kg	U-value / W/m <sup>2</sup> K	Fire class
Micro	4.5	2.5 x 2.5	11.3	1,350	0.26–0.29	P3
Mini	6.3	2.5 x 3.4	16.1	1,700	0.26–0.29	P3
Midi	7.7	2.5 x 4.0	19.3	2,000	0.26–0.29	P3
Medium	12.3	3.4 x 4.5	32	2,650	0.26–0.29	P3
Maxi	16.8	3.4 x 6.0	43.6	3,350	0.26–0.29	P3
Mega	20.9	3.4 x 7.3	52.3	4,000	0.26–0.29	P3



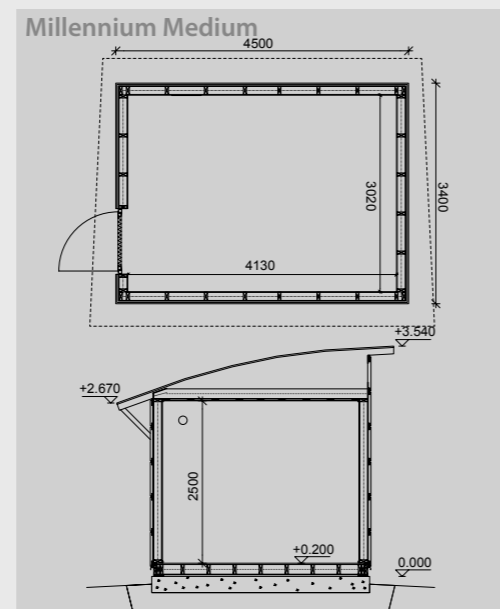




# Millennium

The distinctive rounded roof of the **Esari Millennium** makes it the flagship of our selection. It is popular among licensing authorities due to its design, and the Millennium is chosen for sites for which only the very best will do. The model's standard fire class is P3, which can be changed to meet the requirements of fire class EI30/EI60 with technical changes to the structure. Facade cladding is chosen according to the customer's needs. In addition to various sheet metal options, we also offer wood, wood-based panel and brick cladding. Machine-seamed sheeting and felt roofing are suitable materials for the curved roof.

- Room height 2.5 m
- Floor's load-bearing capacity 600 kg/m<sup>2</sup>
- Steel door painted to match the walls
- Abloy locks keyed to the customer's specifications
- Fire class P3
- Structural U-value 0.26–0.29 W/m<sup>2</sup>K



Millennium Mini with sheet metal cassette



Millennium Medium with sheet metal



Millennium Maxi with sheet metal cassette cladding

Millennium rage	Area / m <sup>2</sup>	External dimensions / m x m	Volume / m <sup>3</sup>	Weight / kg	U-value / W/m <sup>2</sup> K	Fire class
Micro	4	2.5 x 2.5	11.3	1,350	0.26–0.29	P3
Mini	6	2.5 x 3.4	15.8	1,700	0.26–0.29	P3
Midi	7.7	2.5 x 4.0	19.3	2,000	0.26–0.29	P3
Medium	12.3	3.4 x 4.5	31	2,650	0.26–0.29	P3
Maxi	16.8	3.4 x 6.0	42	2,650	0.26–0.29	P3
Mega	20.9	3.4 x 7.3	52.3	4,000	0.26–0.29	P3



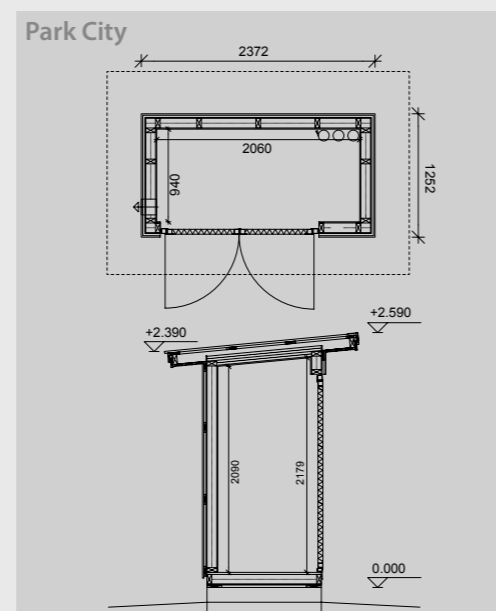




# Park

**Esari Park** is our smallest P3 fire-rated equipment shelter that can be serviced from the inside. Regardless of its small size, the Park boasts the same high-quality solutions and sturdy construction than its bigger siblings. The Park is a wood-framed equipment shelter with 100 mm insulation. It is available with a wide range of accessories for various purposes and several cladding options in three models: Basic, City and Millennium. The shelter can be fitted with a normal access door instead of double doors. The Park model is also available with a foundation element that serves as a cable manhole.

- Room height 2.1 m
- Floor's load-bearing capacity 600 kg/m<sup>2</sup>
- Steel profile door
- Abloy locks keyed to the customer's specifications
- Fire class P3
- Structural U-value 0.36 W/m<sup>2</sup>K



Park Basic with sheet metal cladding



Park City with wood cladding



Park Millennium with sheet metal cladding

Park range	Area / m <sup>2</sup>	External dimensions / m x m	Volume / m <sup>3</sup>	Weight / kg	U-value / W/m <sup>2</sup> K	Fire class
Basic	1.94	1.2 x 2.4	4.2	750	0.36	P3
City	1.94	1.2 x 2.4	4.2	750	0.36	P3
Millennium	1.94	1.2 x 2.4	4.2	750	0.36	P3





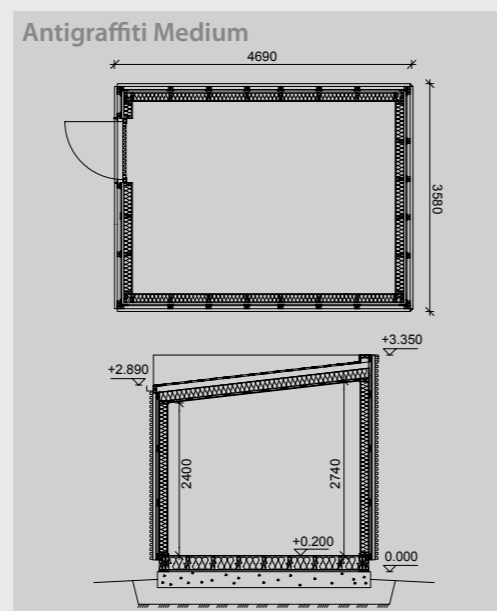


## Antigraffiti

The **Antigraffiti** range is designed for sites with a high risk of vandalism and graffiti. The shelter's modern latticed wood cladding of the wall deters vandalism since it has no unbroken surfaces.

The model range is type-approved in the Helsinki, Espoo and Vantaa, which expedites the building permit process in these areas.

The model's standard fire class is P3, which can be changed to meet the requirements of fire class EI30/EI60 with technical changes to the structure.



Antigraffiti range	Area / m <sup>2</sup>	External dimensions / m x m	Volume / m <sup>3</sup>	Weight / kg	U-value / W/m <sup>2</sup> K	Fire class
<b>Park</b>	2	1.5 x 2.8	6.4	1,050	0.26–0.29	P3
<b>Micro</b>	4	2.7 x 2.7	16.4	1,800	0.26–0.29	P3
<b>Mini</b>	6	2.7 x 3.6	22.6	2,200	0.26–0.29	P3
<b>Medium</b>	12.3	3.6 x 4.7	43.6	3,350	0.26–0.29	P3
<b>Maxi</b>	16.8	3.6 x 6.2	58.4	4,150	0.26–0.29	P3







## Fire-rated equipment shelters

We also deliver equipment shelters manufactured to the specifications of fire classes P1 and P2. Our fire-rated shelters are designed and built according to the customer's needs. The equipment shelters in our standard range can also be upgraded to fire class P1 or P2.



Steel-framed fire class P2 equipment shelter.



Concrete-framed fire class P1 equipment shelter.







## Delivery methods and electrical installations

### Delivery methods

The majority of our equipment shelters are finished indoors in our production plant and transported to the site fully assembled. If necessary, Esari will also deliver and install the foundation elements before erecting the shelter. Finally, the equipment shelter is erected on the finished foundations.

If the assembled shelter is too big for road transport, we can deliver it as prefabricated elements. If it is not possible to transport the assembled shelter to the construction site, we will manufacture the elements in our factory and perform the assembly and installation work on site.

### Delivery contents

Our equipment shelter deliveries are customised to our customers' individual needs. You can choose a standard or custom electrical installation. We will install the switchgear, auxiliary electrical systems and reserve power generators if required. Solar panels are also available for our equipment shelters to make use of solar power. You can also order diverse cooling and ventilation solutions and fire safety products through us.







We use  
renewable  
energy.

# The best in equipment shelters



# Esari

Veikontie 3 • FI-69600 KAUSTINEN, FINLAND  
tel. +358 20 7109 480 • fax +358 20 7109 481  
firstname.lastname@esari.fi • www.esari.fi